

BS-(530-550)MC-144HC

MODULE SIZE

2279*1134*35mm

POWER OUTPUT RANGE

530W - 550W

POSITIVE POWER TOLERANCE

0 - + 3%

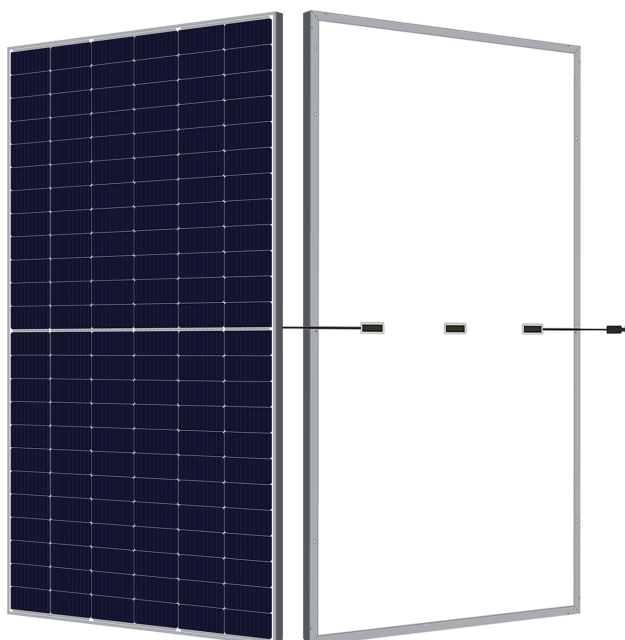
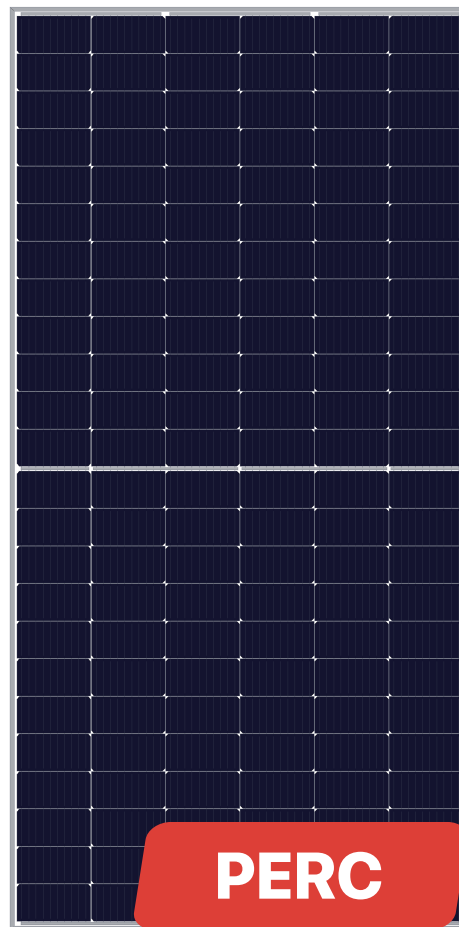
MONOCRYSTALLINE MODULE

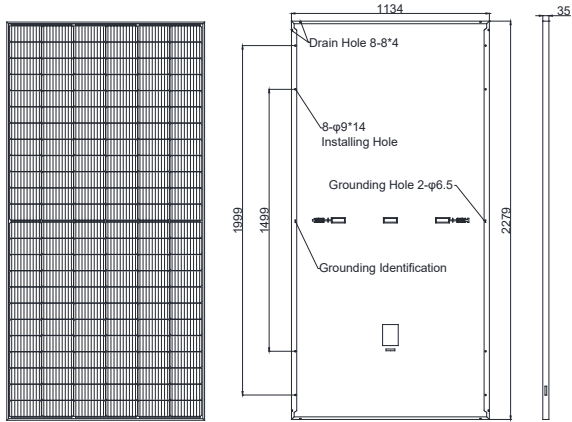
144 CELL

MAXIMUM EFFICIENCY

21.28%

LINEAR PERFORMANCE WARRANTY

**15 Year Product Warranty
30 Year Linear Power Warranty**Competitive Low Light
PerformanceReduced Power Loss by
Minimising the Effect of
Shadow ShadingHigh Density
EncapsulationMulti-Busbar
Technology2400pa Wind Load
5400pa Snow LoadReduced BOS &
Increased ROI**BRIGHT
SOLAR**

DIMENSIONS OF PV MODULE

STRUCTURAL CHARACTERISTICS

Module Size	2279x1134x35mm
Weight	25kg
Cell	single crystal PERC 182x91mm(144pieces)
Glass	3.2mm tempered coated glass, low iron
Frame	anodized aluminum alloy
Junction Box	IP68, 3 diodes
Output Lead	4.0mm ² 300mm(+)/ 300mm(-) or customized
Mechanical Load	front 5400pa / back 2400pa

ELECTRICAL CHARACTERISTICS

Component Model	TD-530MC-144HC	TD-535MC-144HC	TD-540MC-144HC	TD-545MC-144HC	TD-550MC-144HC
Maximum Power (PMP)	STC 530	STC 535	STC 540	STC 545	STC 550
Open Circuit Voltage (VOC)	49.0	49.2	49.4	49.6	49.8
Short Circuit Current (ISC)	13.76	13.81	13.84	13.94	13.99
Maximum Power Voltage (VMP)	41.48	41.65	41.82	41.99	42.15
Maximum Power Current (IMP)	12.78	12.85	12.92	12.98	13.05
Component Efficiency (η)	20.56	20.76	20.95	21.14	21.28
Power Tolerance	(0, +3%)				
Maximum System Voltage	1500V DC				
Maximum Rated Fuse Current	25A				

STC: Irradiance 1000 W/m² module temperature 25 °C AM=1.5

TEMPERATURE CHARACTERISTICS

Maximum Power Temperature Coefficient	-0.35 % / °C
Temperature Coefficient Of Open Circuit Voltage	-0.27 % / °C
Temperature Coefficient Of Short Circuit Current	+0.05 % / °C
Working Temperature	-40 ~ +85 °C
Nominal Operating Cell Temperature (NOCT)	45 ± 2 °C

PACKING METHOD

Module Size	2279x1134x35mm
Container	40' HQ
Quantity Per Pallet	31
Number Of Pallets Per Container	20
Quantity Per Container	620

I-V Curve
