



**BS-(415-435)TG-108HC**

MODULE SIZE

**1722\*1134\*30mm**

POWER OUTPUT RANGE

**415W - 435W**

POSITIVE POWER TOLERANCE

**0 - + 3%**

N-TOPCON MONOCRYSTALLINE MODULE

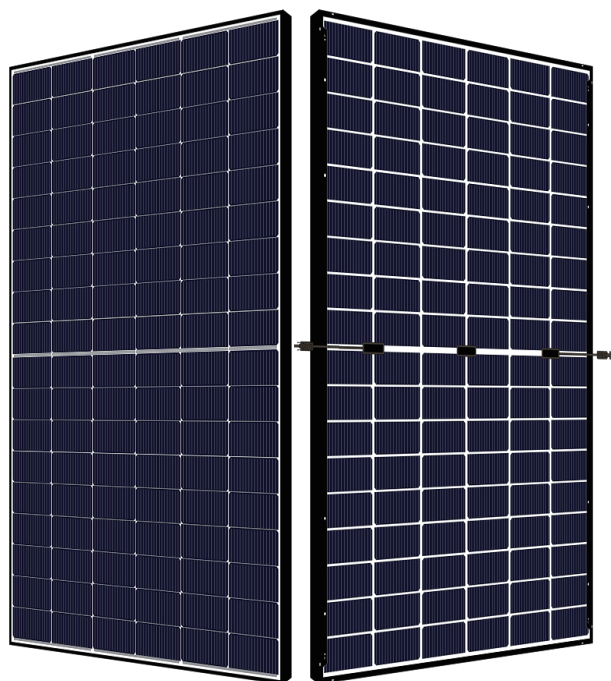
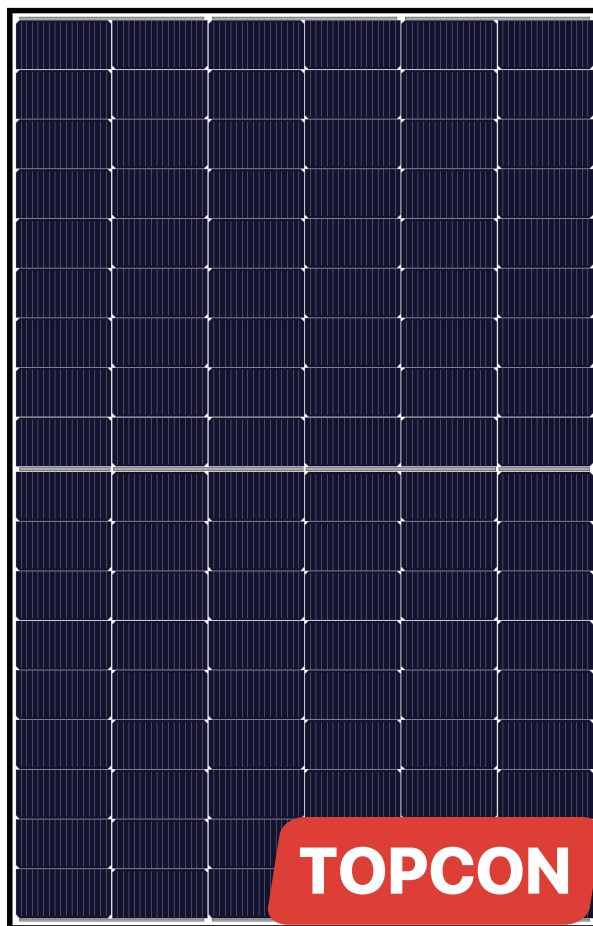
**108 CELL**

MAXIMUM EFFICIENCY

**22.28%**

LINEAR PERFORMANCE WARRANTY

**15 Year Product Warranty**  
**30 Year Linear Power Warranty**



Competitive Low Light Performance



Reduced Power Loss by Minimising the Effect of Shadow Shading



High Density Encapsulation



Multi-Busbar Technology



2400pa Wind Load  
5400pa Snow Load



LCOE BOS  
Reduced BOS & Increased ROI

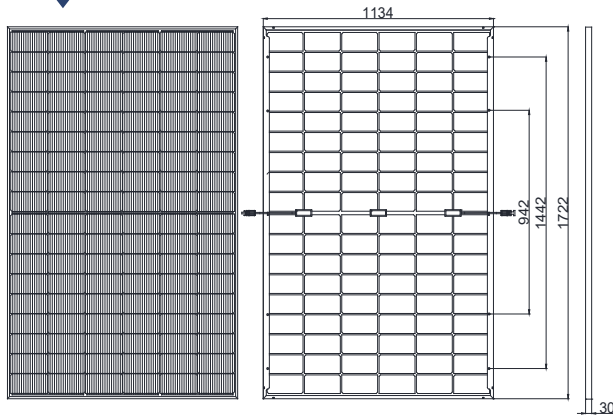
**BRIGHT  
SOLAR**

[www.brightsolar.cn](http://www.brightsolar.cn)

Add: No. 9 Qilin Bay, Yangshan Town, Wuxi, China

Tel: 0086 17715810958

E-mail: [info@brightsolar.cn](mailto:info@brightsolar.cn)

**DIMENSIONS OF PV MODULE**

**STRUCTURAL CHARACTERISTICS**

Module Size	1722x1134x30mm
Weight	20kg
Cell	single crystal N-topcon 182x91mm(108pieces)
Glass	3.2mm tempered coated glass, low iron
Frame	anodized aluminum alloy
Junction Box	IP68, 3 diodes
Output Lead	4.0mm <sup>2</sup> 300mm(+)/ 300mm(-) or customized
Mechanical Load	front 5400pa / back 2400pa

**ELECTRICAL CHARACTERISTICS**

Component Model	TD-415TG-108HC	TD-420TG-108HC	TD-425TG-108HC	TD-430TG-108HC	TD-435TG-108HC
Maximum Power (PMP)	STC 415	STC 420	STC 425	STC 430	STC 435
Open Circuit Voltage (VOC)	37.92	38.11	38.30	38.49	38.68
Short Circuit Current (ISC)	13.99	14.07	14.15	14.23	14.31
Maximum Power Voltage (VMP)	31.32	31.51	31.70	31.88	32.06
Maximum Power Current (IMP)	13.25	13.33	13.41	13.49	13.57
Component Efficiency (η)	21.25	21.51	21.76	22.02	22.28
Power Tolerance	(0, +3%)				
Maximum System Voltage	1500V DC				
Maximum Rated Fuse Current	30A				

STC: Irradiance 1000 W/m<sup>2</sup> module temperature 25 °C AM=1.5

**TEMPERATURE CHARACTERISTICS**

Maximum Power Temperature Coefficient	-0.30 % / °C
Temperature Coefficient Of Open Circuit Voltage	-0.25 % / °C
Temperature Coefficient Of Short Circuit Current	+0.046 % / °C
Working Temperature	-40 ~ +85 °C
Nominal Operating Cell Temperature (NOCT)	45 ± 2 °C
Bifacial-Factor	80% ± 10%

**PACKING METHOD**

Module Size	1722x1134x30mm
Container	40' HQ
Quantity Per Pallet	36
Number Of Pallets Per Container	26
Quantity Per Container	936

**I-V Curve**
